



Cleft

By Fergal McElherron





Cleft

by Fergal McElherron

Twin sisters, Fea and Caireen, living on a harsh, remote island, are raising a boy together. Abandoned by their mother at a young age and left in their teens to fend for themselves by their troubled father, the women have created their own emotional ecosystem. While Caireen embraces motherhood, Fea struggles as she watches the boy grow in the likeness of his father whose body lies buried beneath the hawthorn tree.

CAST

Fea

Simone Kirby

Caireen

Penny Layden

CREATIVE TEAM

Writer

Fergal McElherron

Director

Lynne Parker

Sound Designer

Joe Hunt

Cleft was originally produced as a stage show by Rough Magic and glór in association with Galway International Arts Festival and Kilkenny Arts Festival. The audio play was produced by Rough Magic Theatre Company and Hatch Pictures.



HATCH PICTURES was formed in 2018 by Simone Kirby and Fergal McElherron. Their first venture was the short film *CLEAN*, written by Fergal McElherron and directed by Gary Cooper. It premiered at the prestigious Galway Film Fleadh in 2019, and went on to the Irish Film Festa in Rome, and the Irish Film Festival in Moscow. It was also selected for the Irish Film Festival in London, before Covid hit.

Working with Rough Magic, and Sound Designer, Joe Hunt, Hatch took Fergal McElherron's stage play *Cleft* and reworked it to share with audiences in an audio format. Stuck in isolation in 4 different places, the play was recorded and given a whole new sound design.

Hatch also, using new found knowledge of audio equipment, branched out, and scripted and recorded online courses for a new Fire Safety company

ROUGH

MAGIC

Rough Magic is one of Ireland's leading theatre producers and a significant mentor of emerging artists. It provides an unexpected angle to the mainstream and an anchor to the emerging generation.

Since its foundation in 1984, Rough Magic has produced 134 shows, including 39 World Premieres and 30 Irish Premieres. With 38 continuous years in the field of theatre production and touring, Rough Magic is recognised both as an independent creative entity and a valued institution. We operate as an ensemble across a wide spectrum of scale and style, covering international contemporary work, world classics and new Irish writing, with the audience at the heart of everything we do.

In 2021 the company launched COMPASS, folding play development and support for emerging theatre artists into the company's core programming.

Awards include: a record four Irish Times Irish Theatre Awards for Best Production (*Copenhagen* 2003, *Improbable Frequency* 2005, *The Taming of the Shrew* 2007, *Don Carlos* 2008); London Time Out Award; two Edinburgh Fringe First Awards and the Irish Times Irish Theatre Award for Best Ensemble for *A Midsummer Night's Dream* in 2018

Rough Magic is a Registered Charity - No: 20205902
To learn more about the company visit www.roughmagic.ie

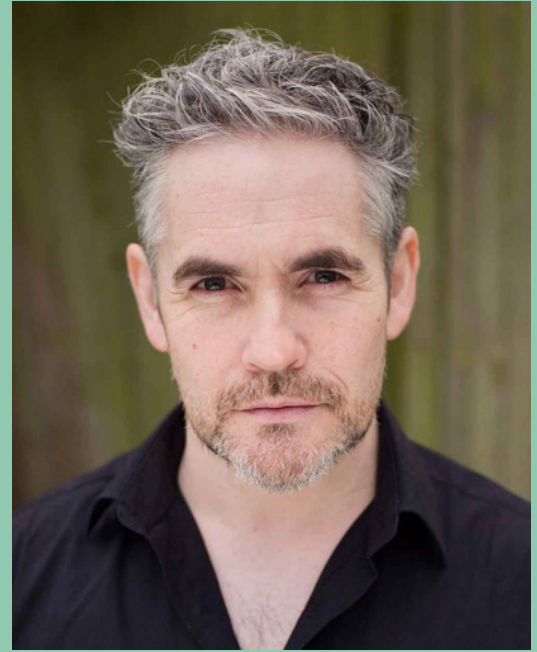
Fergal McElherron - Writer

Fergal's other writing credits include: *To Have And To Hold* (Kabosh Theatre Company); *In The Blink Of An Eye, Prodigal, Chopped Liver* (RTE Radio) and *Clean* (Short Film).

As an actor Fergal has worked with companies including Rough Magic, The Abbey, Shakespeare's Globe, The Donmar Warehouse, Druid Theatre Company, Corn Exchange, Landmark, Performance Corporation, Kabosh, and Prime Cut.

Awards include Best Supporting Actor (Irish Times/ESB Theatre Awards) and Best Actor (Dublin Fringe Festival).

Film and TV credits include: *Resistance* (RTE); *This Is England '90* (Channel 4); *Doctors* (BBC); *Cold Feet* (ITV); *Victoria* (ITV); *Summerland* (Feature Film) and *King Arthur: Legend Of The Sword* (Feature Film).



Lynne Parker - Director

Artistic Director and co-founder, Rough Magic.

Productions for Rough Magic include: *All the Angels* by Nick Drake (with Smock Alley), *Solar Bones* by Mike McCormack (KAF), *Hecuba* by Marina Carr (Dublin Theatre Festival), *A Midsummer Night's Dream* (Kilkenny Arts Festival, Best Ensemble 2018) *Melt, The House Keeper* (Best New Play 2012), *Don Carlos* (Best Production 2007), *The Taming of the Shrew* (Best Production 2006), *Improbable Frequency* (Best Production, Best Director, 2004), *Copenhagen* (Best Production 2002), *Pentecost* (Best Irish Production DTF 1995), *Digging For Fire* (London Time Out Award 1992), *New Morning, Love and A Bottle and Shiver*.



Other credits include - *Beowulf* (Tron); *Heavenly Bodies, The Sanctuary Lamp, Down The Line*, (Abbey); *The Drawer Boy* (GIAF); *The Girl Who...* (Theatre Lovett); *Macbeth* (Lyric) and productions for Charabang, Druid, the Gate, Bush, Almeida, Old Vic, West Yorkshire Playhouse, Corn Exchange, RSC, Traverse, Birmingham Rep, Teatrul National Bucharest and The Lir Academy.

Awarded the Irish Times Special Tribute Award, 2008 and an Honorary Doctorate, Trinity College Dublin 2010

Joe Hunt - Sound Designer

Born in Sligo, Joe is a designer of sound, projection and composer of music, editing and mixing soundscapes for large and small scale installations, theatre and site specific productions.

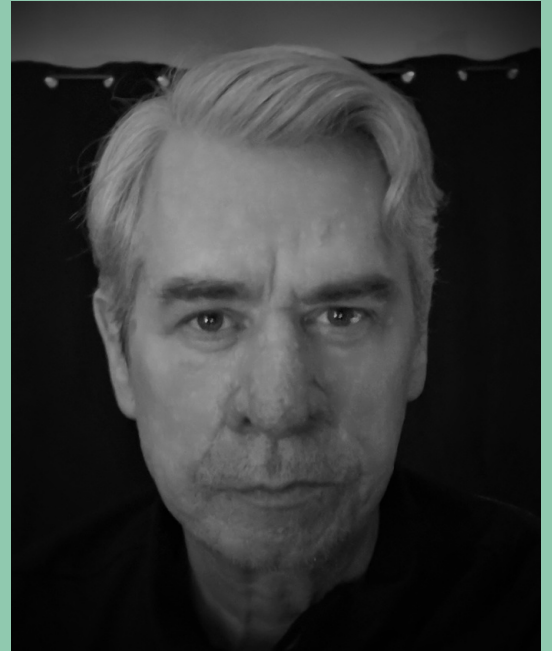
He is a projection designer for indoor and outdoor theatre, painters, and sculptors.

Joe's band Indian formed in 1992 had 4 top 30 hits in the mid 90's, two reaching top 20 and one climbing into the top 10, the band who performed on Gaybo's The Late Late Show split in 2019.

He has worked with Blue Raincoat Theatre Co and has designed all of their shows from 1999 to present picking up two Irish Times Theatre Award nominations for Shackleton 2017 and The School Days of Thaddeus K 2019

When time allows Joe gives sound/projection design lectures and workshops at UCG Drama Dept. / UCD Ad Astra / The Lir and on site workshops at the factory performance space (postgraduate workshop series) for IT Sligo

Cleft was Joe's first audio play and he designed it remotely during lockdown using foley and the sounds around his 5km restriction in Leitrim to create the landscape.



Simone Kirby - Fea

Most recently Simone played Bibi in *Hidden Assets* (RTE), for which she was nominated for her third IFTA. She also plays Mary Malone, a leading role, in the BBC/HBO series *His Dark Materials*.

Simone's film credits include BAFTA nominated feature *Notes On Blindness* (Archers Mark), and Ken Loach's feature *Jimmy's Hall*, playing the female lead, Oonagh.

Other film credits are: *Dating Amber* (Tilted Pictures), *The Hole In The Ground* (Savage Productions), *Calm With Horses* (DMC), *Mother's Day* (BBC), *Alice Through The Looking Glass* (Disney), *Artemis Fowl* (Disney), *The Truth Commissioner* (BBC), *The Flag* (Treasure Ent.), *England Is Mine* (Honlodge), and *Season of The Witch* (Lionsgate).

Television credits include *The One* (NETFLIX), *Resistance* (REBELLION 2) for RTE/NETFLIX, *Peaky Blinders* (BBC), *Silent Witness* (BBC), *Houdini & Doyle* (ITV), *Dark Heart* (ITV), *Clean Break* (RTE), *Love Hate* (RTE), *Pure Mule* (RTE), *Single Handed* (RTE/ITV), and as writer and performer in *Meet Your Neighbours* with PJ Gallagher.

For theatre Simone has performed extensively with The Old Vic, Shakespeare's Globe, The Irish Rep in New York, The Abbey Theatre and The Gate Theatre in Ireland, and with Druid, Corn Exchange, and most recently *Cleft* with Rough Magic/ Glór. This is her third production with Rough Magic, after *Taming of The Shrew* and *Don Carlos*.

Awards and nominations include Best Supporting Actress Nomination (IFTA 2017), Best Actress nomination (IFTA 2015), Best actress nomination (Irish Theatre Awards 2004) and winner of The Jayne Snow Award, (Dublin Fringe Festival 2005)



Penny Layden - Caireen

For the National Theatre: *The Ocean at the End of the Lane* (West End), *Paradise*, *Jellyfish*, *Macbeth*, *My Country: A Work in Progress*, *Another World: Losing Our Children to Islamic State*, *An Oak Tree*, *Everyman*, *Edward II*, *Table* and *Timon of Athens*.

For the RSC: *The Tempest*, *Roberto Zucco* and *Measure for Measure*.

Other theatre includes: *Seeds* (Tiata Fahodzi/Soho), *Cleft* (Rough Magic/Galway Festival), *Sketching* (Wilton's Music Hall), *The Lorax* and *Cinderella* (Old Vic), *Bright Phoenix* (Liverpool Everyman) *Beryl* (West Yorkshire Playhouse) *Nora* (Belgrade, Coventry), *Jellyfish* and *66 Books* (Bush), *Incoming* (Hightide Festival), *Lidless* (Trafalgar Studios/Hightide Festival/Edinburgh), *Draw Me Close*, *Vernon God Little* and *The Art of Random Whistling* (Young Vic), *The Bacchae*, *Mary Barton*, *Electra* and *Mayhem* (Manchester Royal Exchange), *Dancing at Lughnasa* (Birmingham Rep), *The Spanish Tragedy* (Arcola), *Romeo and Juliet*, *The Antipodes* and *Hamlet* (Shakespeare's Globe), *Comfort Me With Apples* (Hampstead Theatre/Tour), *Assassins* (Sheffield Crucible), *Seasons Greetings* and *Popcorn* (Liverpool Playhouse), *The Laramie Project* (West End), *Romeo and Juliet* (Southwark Playhouse), *The Recruiting Officer* (Lichfield Garrick), *A Passage to India*, *The Magic Toyshop* and *Jane Eyre* (Shared Experience), *Maid Marian and her Merry Men* (Bristol Old Vic), *What I Did In The Holidays*, *The Plough And The Stars*, *Hunchback Of Notre Dame*, *Dangerous Corner* and *A Midsummer Night's Dream* (New Vic, Stoke).

Television credits include *Father Brown*, *Belgravia*, *Casualty*, *My Country: A Work in Progress*, *Grantchester*, *Dark Angel*, *EastEnders*, *Doctors*, *Prisoner's Wives*, *Call the Midwife*, *Land Girls*, *Sirens*, *South Riding*, *Doctors*, *Silent Witness*, *Poppy Shakespeare*, *Bad Mother's Handbook*, *Waterloo Road*, *No Angels*, *The Bill*, *Murphy's Law*, *Fat Friends*, *Outlaws*, *M.I.T* and *Casualty*.

Film credits include *Broken* and *The Libertine*.

Radio credits include *Second Chance*, *Uganda* and *Crime and Punishment*.



Acknowledgements

Thank you to Orla Flanagan and Sinead Cahill at glór, Paul Fahy and Mary McGraw at Galway International Arts Festival and Olga Barry and Pat Carey at Kilkenny Arts Festival.

A special thank you to Davin McElherron



Stage Show Creative Team

Lighting Designer

Zia Bergin-Holly

Sound Designer

Cameron Macaulay

Set designed in collaboration by

Lynne Parker and Zia Bergin-Holly

Stage Manager

Andrew McCarthy

Production Manager

Rob Furey

Prop Maker

Anthony Johnson

Photographer

Eamon Ward



**The stage show of CLEFT was supported by Creative Ireland.
Rough Magic is funded by the Arts Council/An Chomhairle Ealaíon.**